



Presents

228 Royal Dublin



Custom built ranch style home. This home is an entertainer's delight! Incredible open floor plan with tons of special features including a walk-out lower level. You enter the home into the open foyer. This home features an open great room. A beautiful kitchen opens to the great room and dining room. Kitchen features include a walk-in pantry, granite counters, two ovens, two sinks, six burner gas stove, warming drawer, two drawer dishwashers, two pull out spice racks, appliance garage, pot filler, microwave cabinet, trash pullout cabinet, above cabinet lighting, under cabinet lighting, and the list goes on! Family room features gorgeous custom built mantel over the gas fireplace and a custom built home entertainment system. This great room opens to a 16 X 32 screened deck with extensive views of nature preserve. Conveniently located on the main level is the master suite with sitting area, walk-in closet, tray ceiling with rope lighting, hallway closet, views of nature preserve and French doors open to the screen porch. Spectacular master bath with granite counter tops, his and her sinks, jetted tub, walk-in tile shower with 6 body sprays and a rain shower head, two way glass mirror to hide the TV with perfect views from the jetted tub, and hot drawers at each sink. First floor also features two more bedrooms connected by a Jack and Jill bath with beautiful cast iron tub with tiled shower. These two bedrooms feature hand painted murals. Take the stairs up to the bonus room with connected full bath. Walk out lower level includes two bedrooms connected by a Jack and Jill bath with cast iron tub and tiled shower, Powder room with vessel sink, media area, pool table area, ping pong area, kitchenette, workout room and loads of storage. Walk out lower level opens up to a beautiful patio featuring stamped concrete. Monitoring/Intercom system throughout house, music system wired throughout house, Christmas candle lighting all located on a cul-de-sac lot. A great home with incredible use of square footage!

Specifications:

- 6,800 Sq. feet
- 5 Bedrooms
- 4 Full & 2 half baths

Exterior:

- Attached oversized 2 car garage
- Stamped concrete patio
- Screened Porch

Interior:

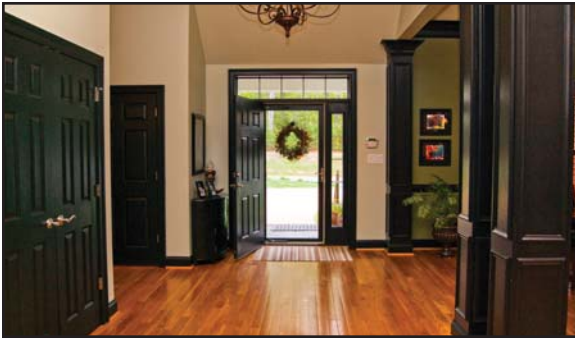
- Large laundry room
- Central vacuum
- Intercom/monitor system

** Information believed to be true but not warranted.*



Take a virtual tour of this home at www.fordscolony.com

One Ford's Colony Drive • Williamsburg, VA 23188 • 757-258-4000 Fax 757-258-4248



Foyer



Great Room



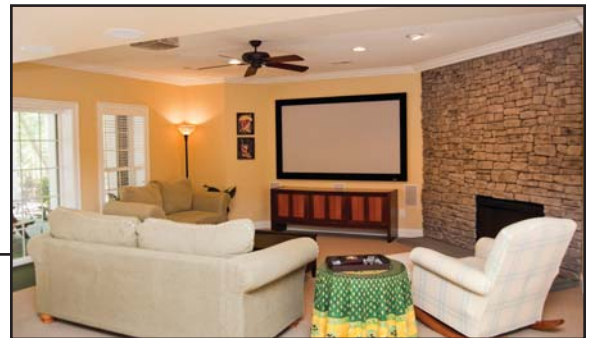
Dining Room



Kitchen



Master Bedroom



Media Room



Bedroom 2



Bedroom 3

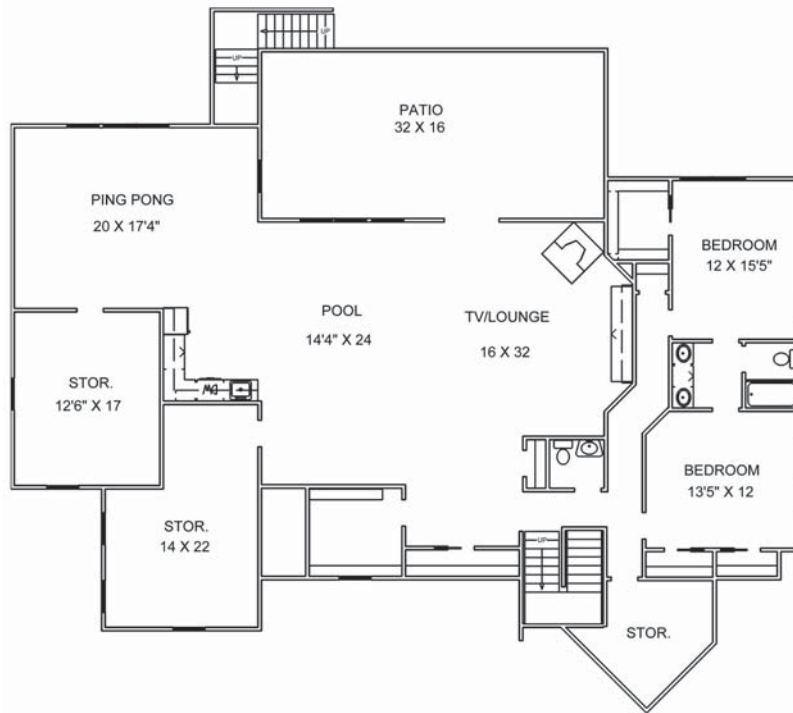


Screened Porch

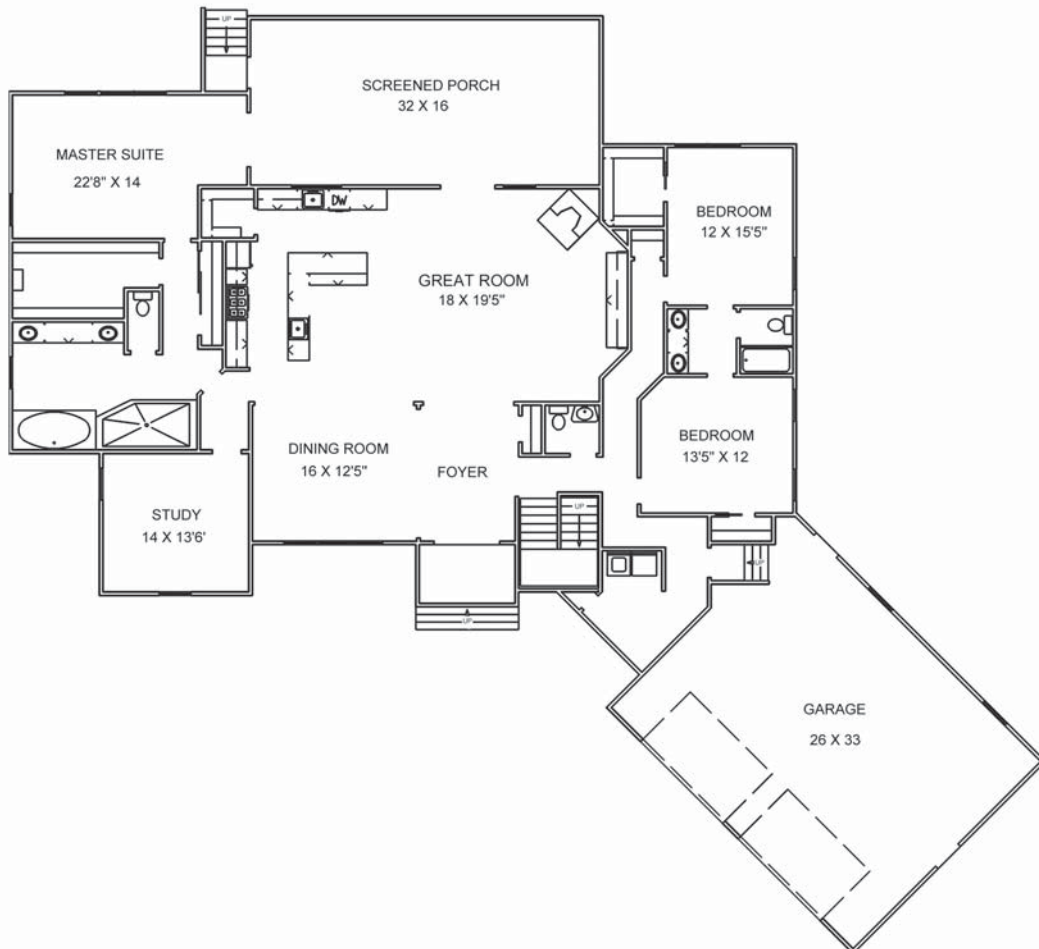


Rear of Home

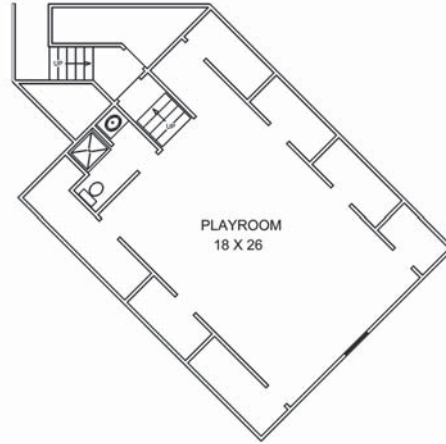
Lower Level



Main Level



Upper Level



One Ford's Colony Drive
Williamsburg, VA 23188
757-258-4000 Fax 757-258-4248
www.fordscolony.com

Nobody Sells Ford's Colony Like Ford's Colony First Choice Realty